

Data



Project: Example Project

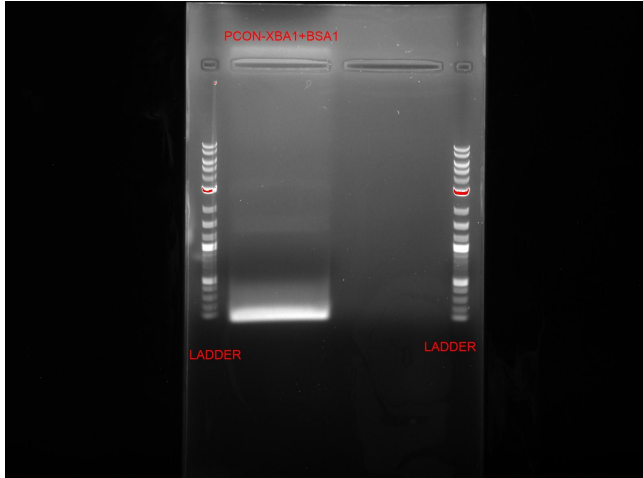
Authors: Ziyu Wang



Dates: 2018-05-22 to 2018-06-22

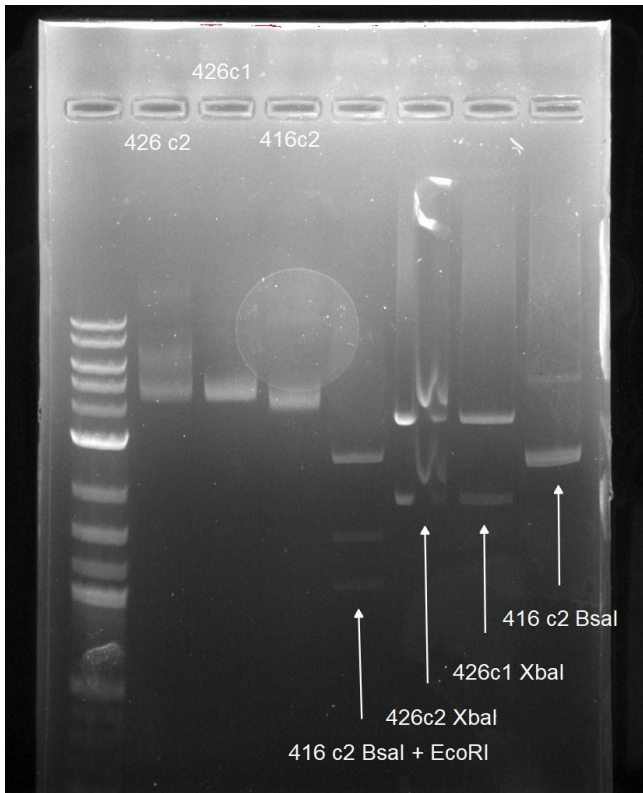
TUESDAY, 5/22/18

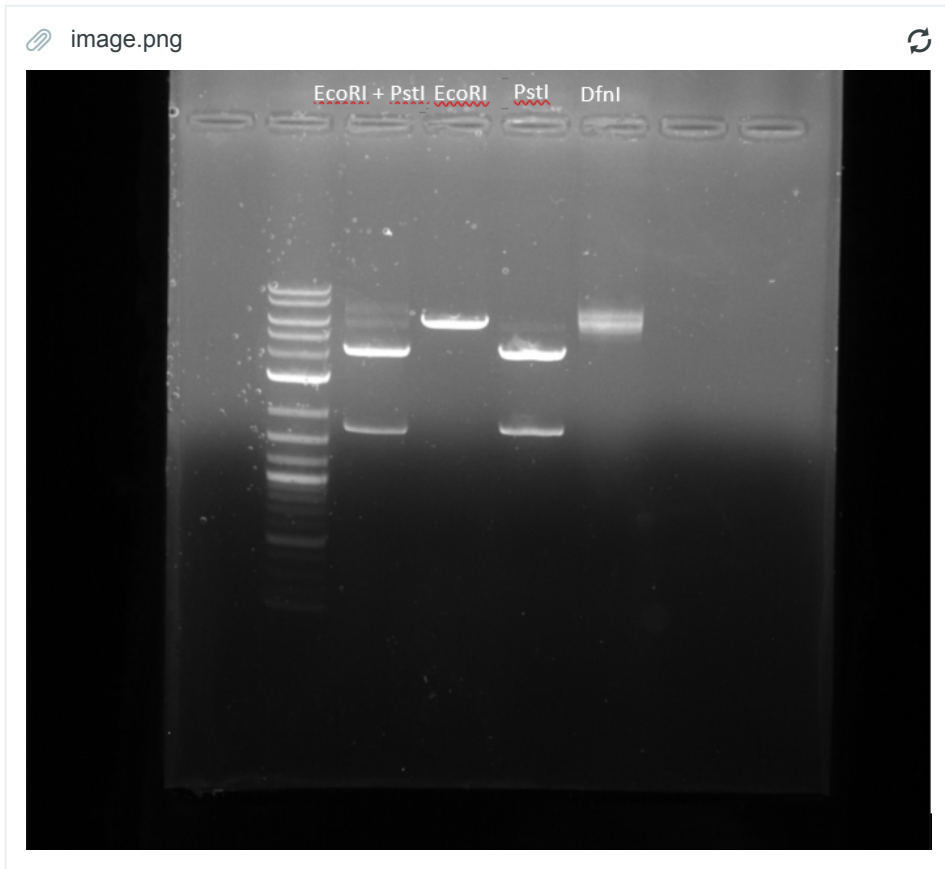
Restriction enzyme test on 5/24

 IGB 2018-06-21_12h12m33s PCON -XBA1+BSA1- u 
sing touch down PCR.jpg

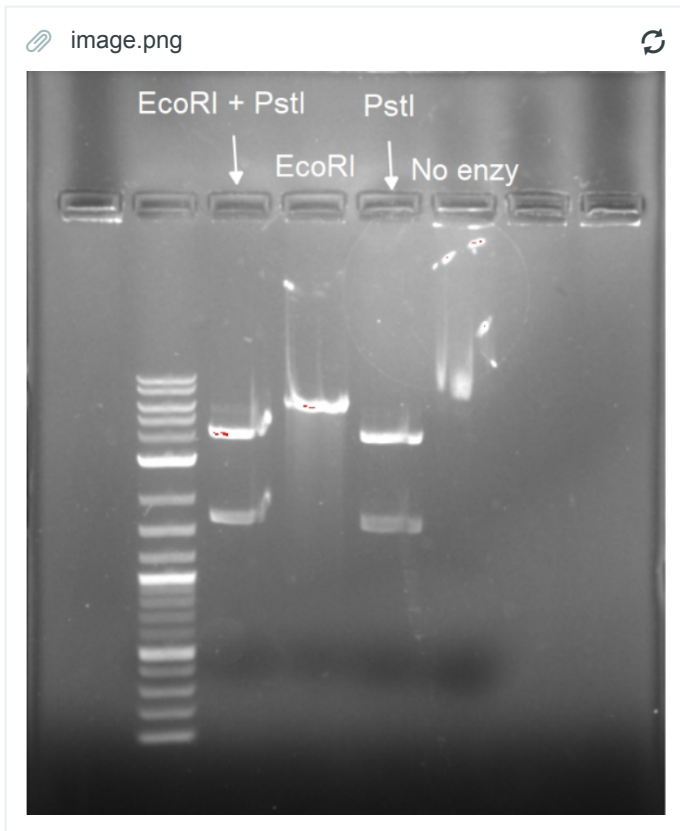


 IGB 2018-06-08_13h41m14s PCR test of p416, p426 
from different colonies.jpg

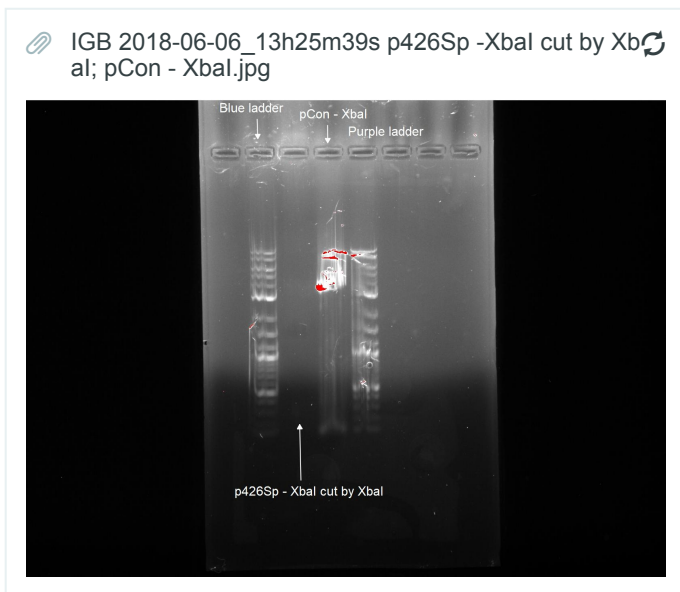
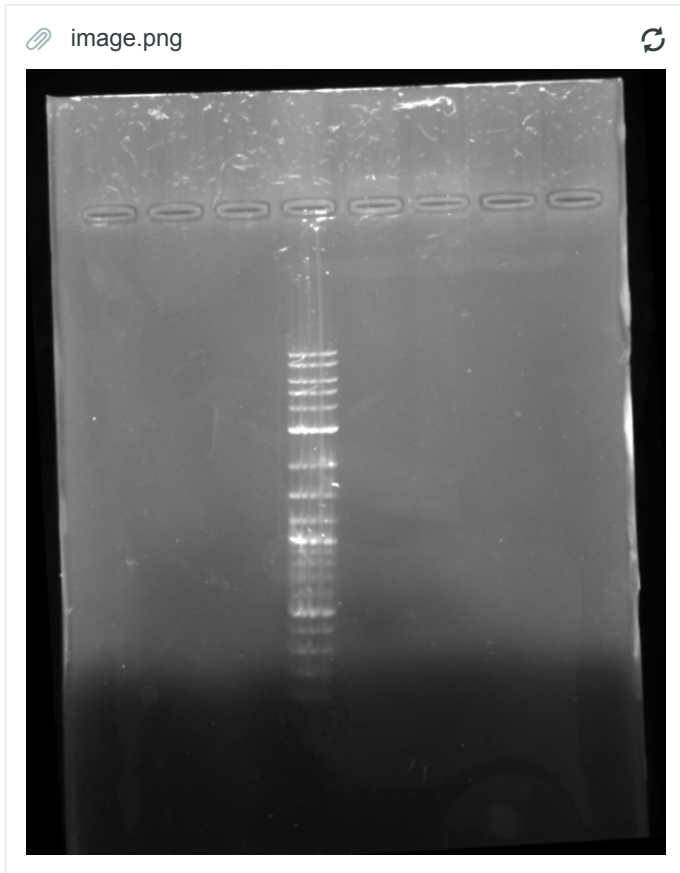




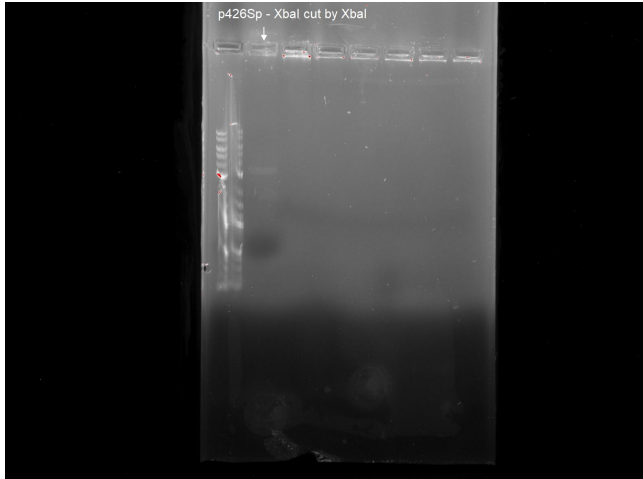
Restriction Enzyme test 2 on 5/25



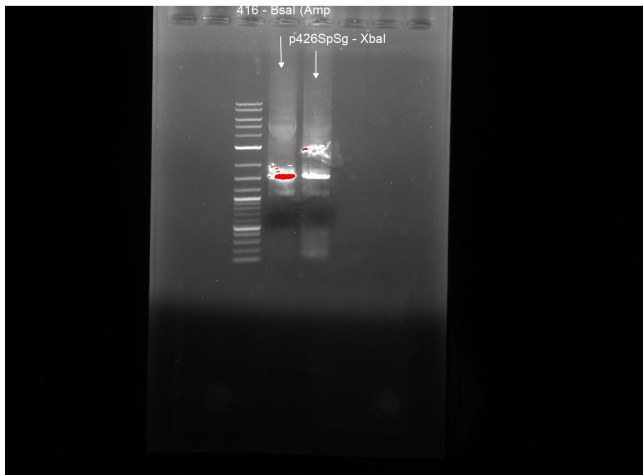
Mini prep test of pCon-gfp from E.Coli on 5/29:



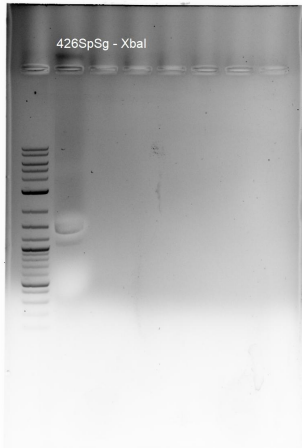
IGB 2018-06-06_12h02m52s p426Sp - Xbal cut by Xbal.jpg



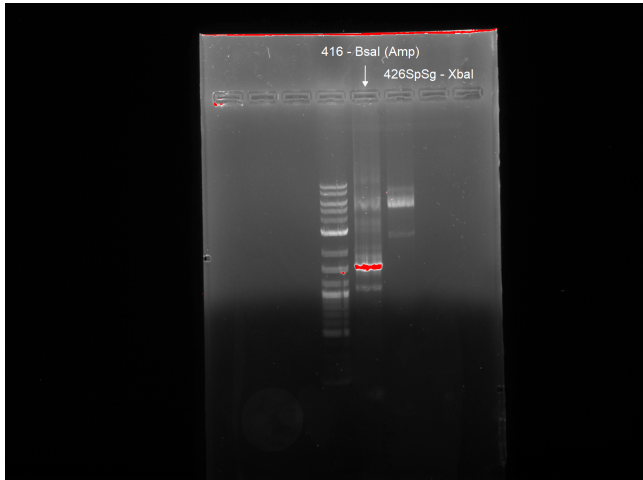
IGB 2018-06-04_15h37m46s PCR result of p416 - Bsal(Amp) on Fri and p426SpSg - Xbal on Mon. both purified.jpg



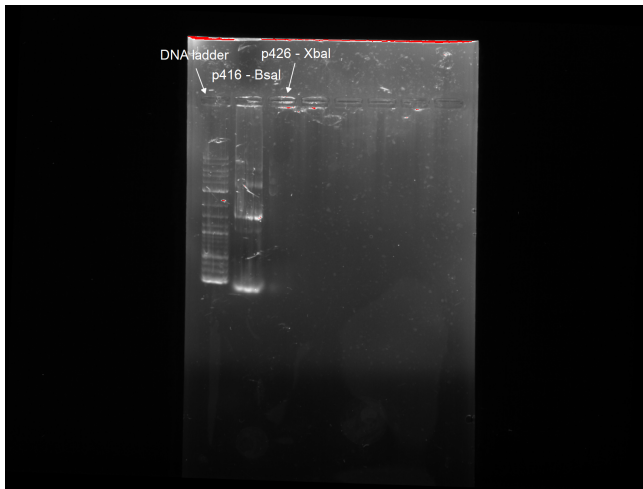
IGB 2018-06-04_14h12m05s p426SpSg - XbaI after purification and pcr.jpg



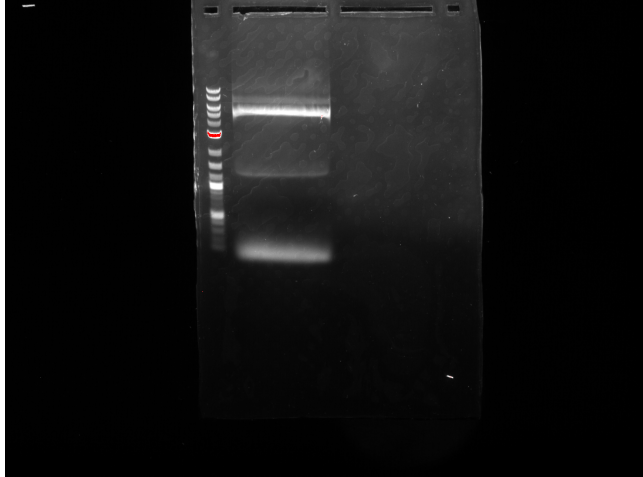
IGB 2018-06-01_15h36m48s PCR 426- XBAL1 416- BSA1 (AMP) (purified DNA) trial 2.tif



IGB 2018-06-01_14h30m25s PCR result of p426 - XbaI and p416 - Bsal(Amp) trial 1 (Not purified).tif



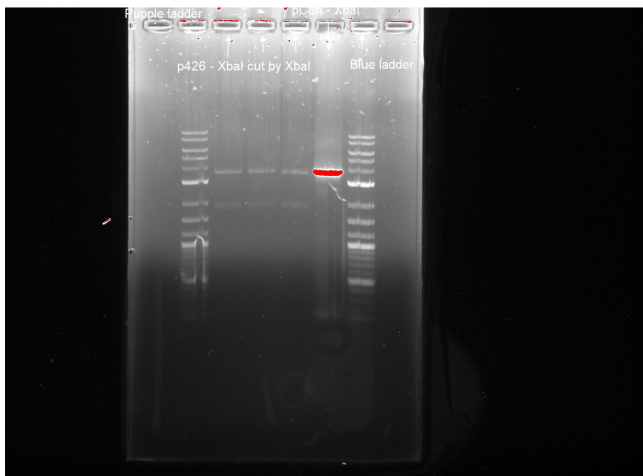
IGB 2018-05-31_15h51m39s PCR for p426 primer te
st.tif

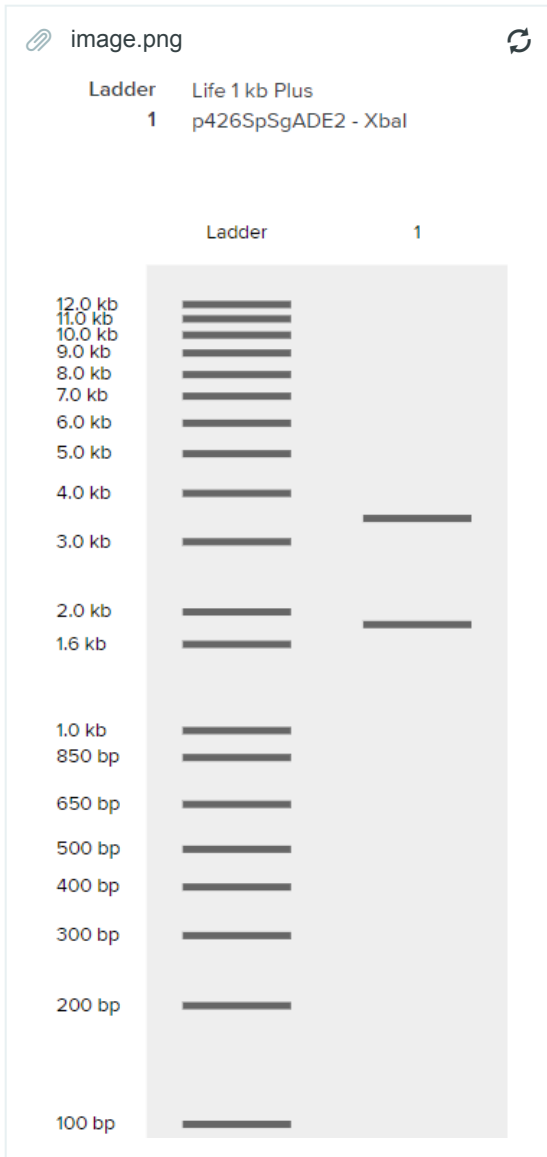


p426 - XbaI cut by XbaI; pCon - XbaI trial 2

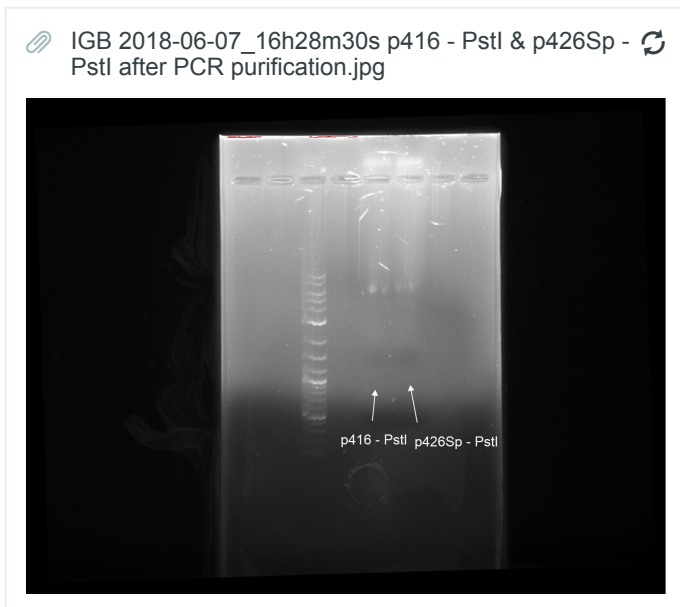
IGB 2018-06-06_15h53m38s

IGB 2018-06-06_15h53m38s p426 - XbaI cut by Xba
I; pCon - XbaI trial 2.jpg



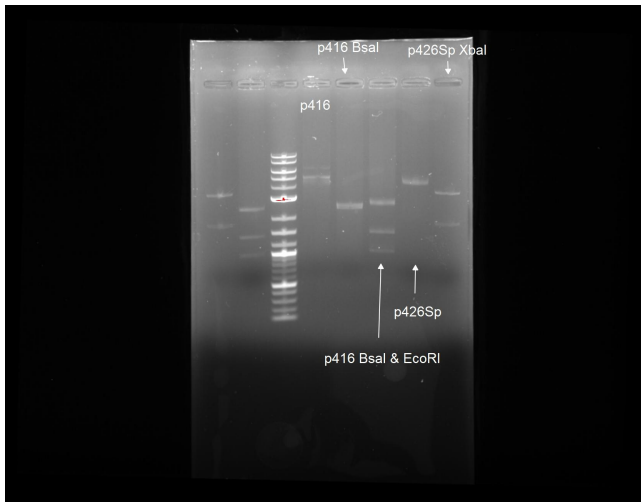


PCR test of p416(Bsal, Bsal & EcoRI) and p426SpSg



IGB 2018-06-07_12h08m35s

IGB 2018-06-07_12h08m35s PCR test of p416(Bsal, Bsal & EcoRI) and p426SpSg(Xbal).jpg

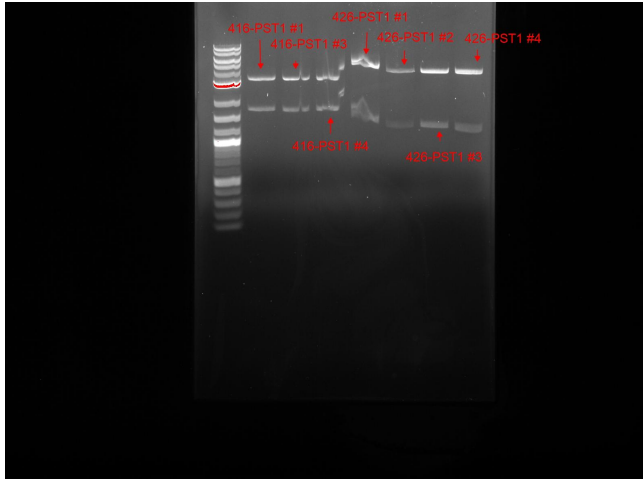


IGB 2018-06-12_13h48m16s 426-pst1 and 416-pst1 digest

IGB 2018-06-12_14h53m41s 416-426 -Pst1 site digested wPst1.jpg

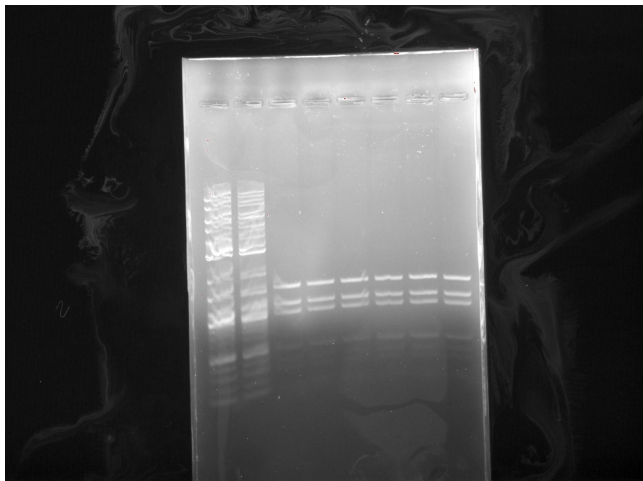


IGB 2018-06-12_13h48m16s 426-pst1 and 416-pst1 digest.jpg



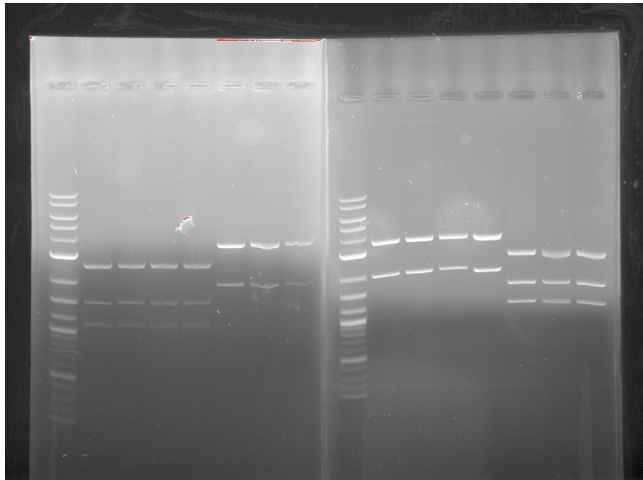
IGB 2018-06-13_13h55m52s dpn1 check

IGB 2018-06-13_13h55m52s dpn1 check.jpg

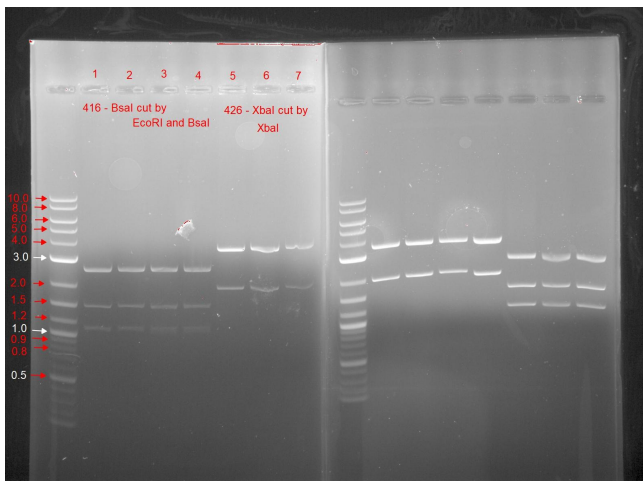


IGB 2018-06-13_17h38m22s pcr test p426 - XbaI cut by XbaI and p416 - BsaI (Amp) cut by BsaI and EcoRI

IGB 2018-06-13_17h38m22s pcr test p426 - XbaI cut by XbaI and p416 - BsaI (Amp) cut by BsaI and EcoRI I.jpg

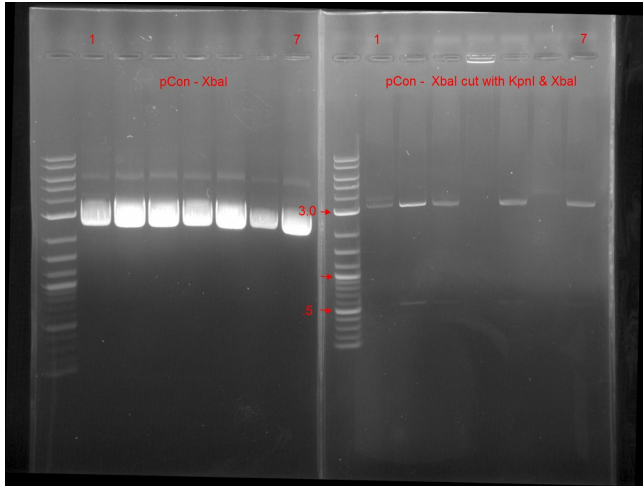


IGB 2018-06-13_17h38m22s pcr test p426 - XbaI cut by XbaI and p416 - BsaI (Amp) cut by BsaI and EcoRI I.jpg

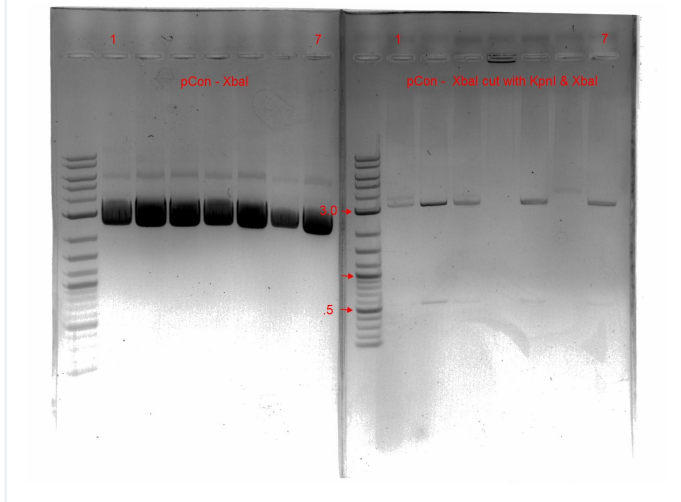


IGB 2018-06-14_12h48m11s PCR test pCon - XbaI cut with XbaI and KpnI

IGB 2018-06-14_12h48m11s PCR test pCon - Xbal cut with Xbal and KpnI.jpg

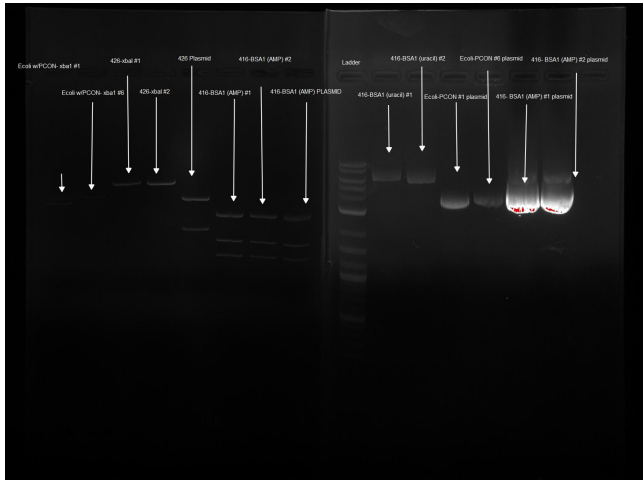


IGB 2018-06-14_12h48m11s PCR test pCon - Xbal cut with Xbal and KpnI invert.jpg



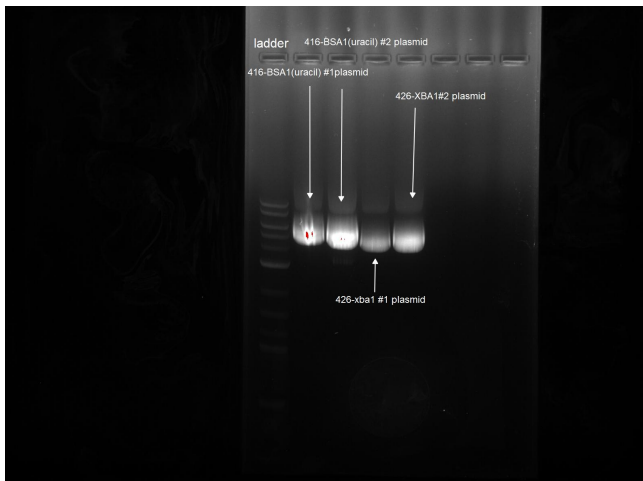
IGB 2018-06-18_12h39m25s Digestion of Ecoli wpcon -xba1, 426-xba1,416-BSA1 (AMP), 416-BSA1 (uracil)

IGB 2018-06-18_12h39m25s Digestion of Ecoli wpcon-xba1, 426-xba1, 416-BSA1 (AMP), 416-BSA1 (uracil).jpg



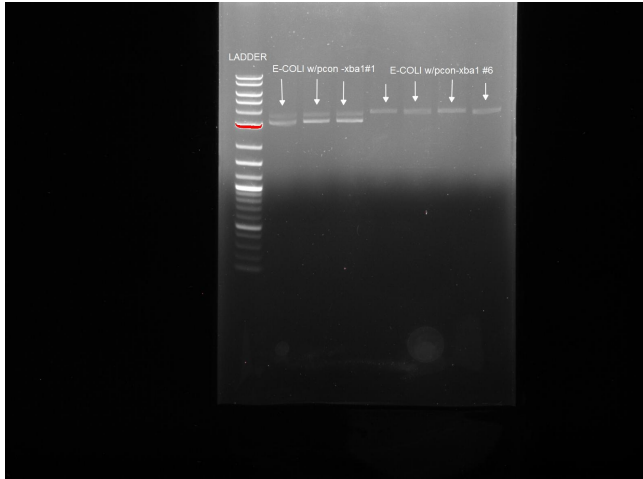
IGB 2018-06-18_12h52m35s 416-BSA1 (URACIL) & 426-XBA1 PLASMIDS

IGB 2018-06-18_12h52m35s 416-BSA1 (URACIL) & 426-XBA1 PLASMIDS.jpg



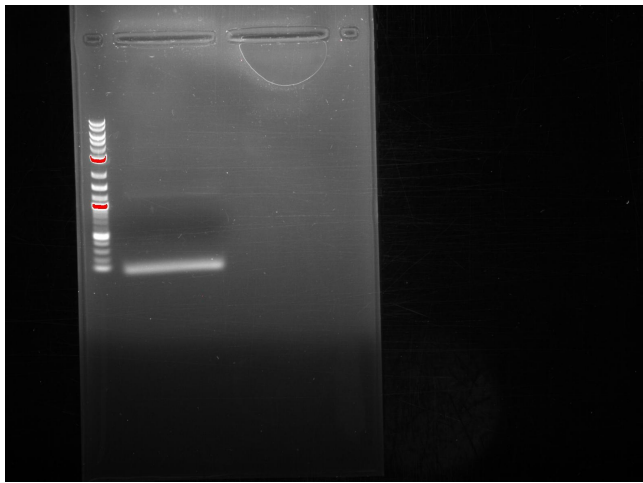
IGB 2018-06-18_15h40m47s digestion of ecoli wpcon-xba1 #1 and #6

IGB 2018-06-18_15h40m47s digestion of ecoli wpc n-xba1 #1 and #6.jpg



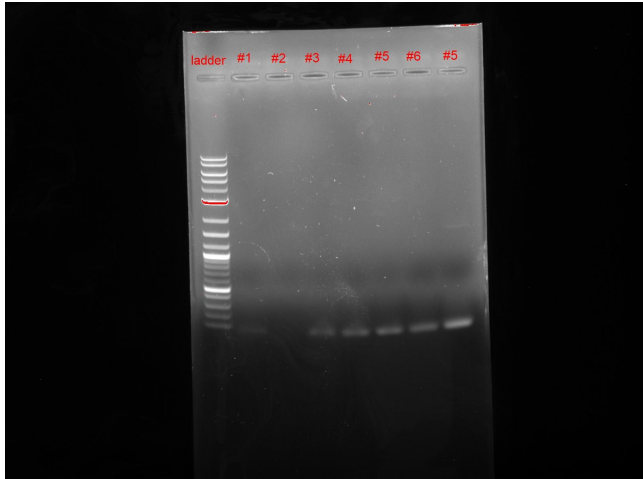
IGB 2018-06-18_17h38m12s pcr pCon+Bsal gel extraction

IGB 2018-06-18_17h38m12s pcr pCon+Bsal gel extr action.jpg



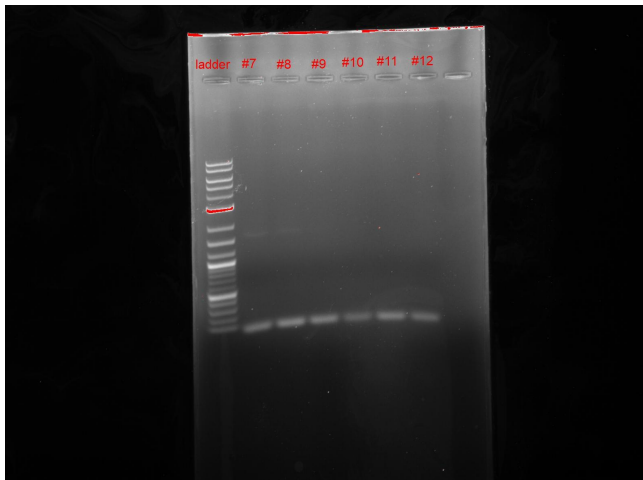
IGB 2018-06-19_13h57m48s PCON+BSA1 site (gradient PCR wells 1-6)

IGB 2018-06-19_13h57m48s PCON+BSA1 site (gradient PCR wells 1-6).jpg



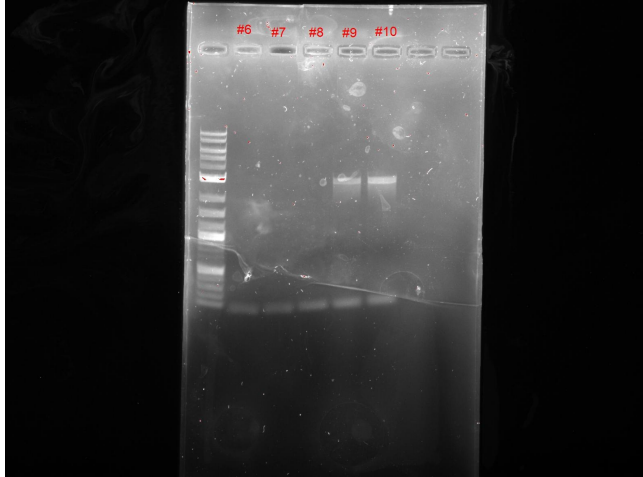
PCON +BSA1 sites (gradient PCR - wells 7-12)

IGB 2018-06-19_14h01m33s PCON+BSA1 sites (gradient PCR - wells 7-12).jpg



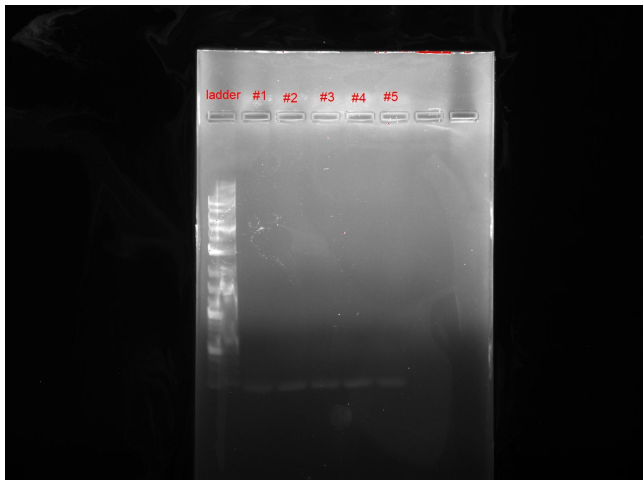
gradient PCR wells 6-10 PCON +XBA1+BSA1

IGB 2018-06-20_13h48m44s gradient PCR wells 6-1
0 PCON+XBA1+BSA1.jpg




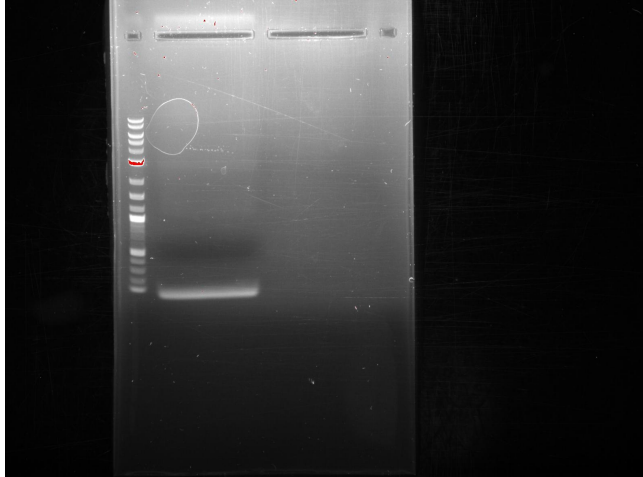
gradient PCR wells 1-5 PCON +XBA1+BSA1


IGB 2018-06-20_13h44m55s gradient PCR PCON+X
BA1+BSA1 #1-5.jpg



IGB 2018-06-20_18h01m45s pCon - XbaI + BsaI try 2 100uL

IGB 2018-06-20_18h01m45s pCon - Xbal + Bsal try 2 100uL (Black.jpg) 

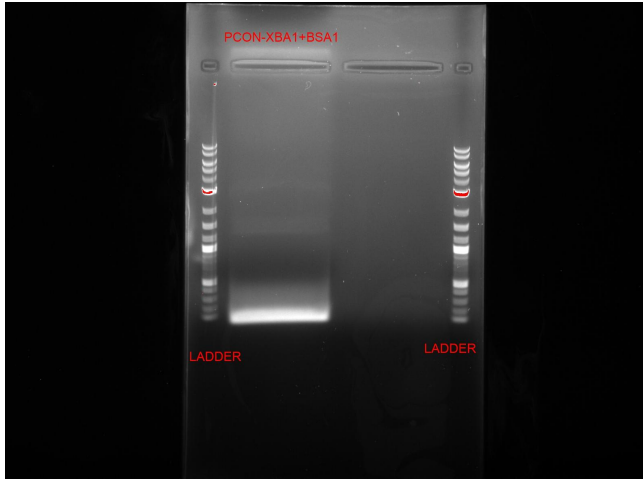


IGB 2018-06-20_18h01m45s pCon - Xbal + Bsal try 2 100uL.jpg 

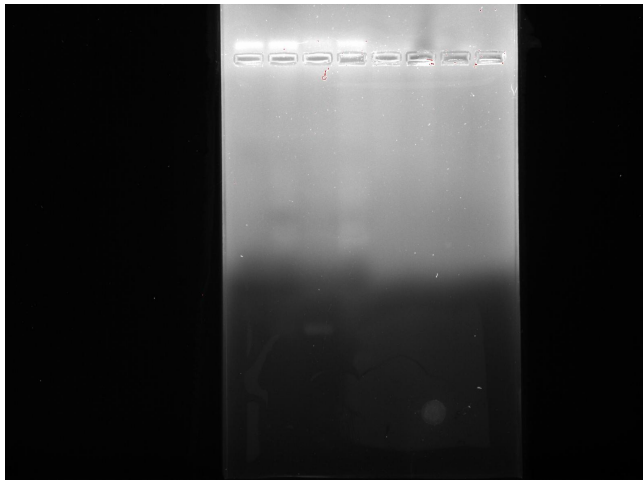


IGB 2018-06-21_12h12m33s PCON -XBA1+BSA1- using touch down PCR



IGB 2018-06-21_12h12m33s PCON -XBA1+BSA1- u
sing touch down PCR.jpg

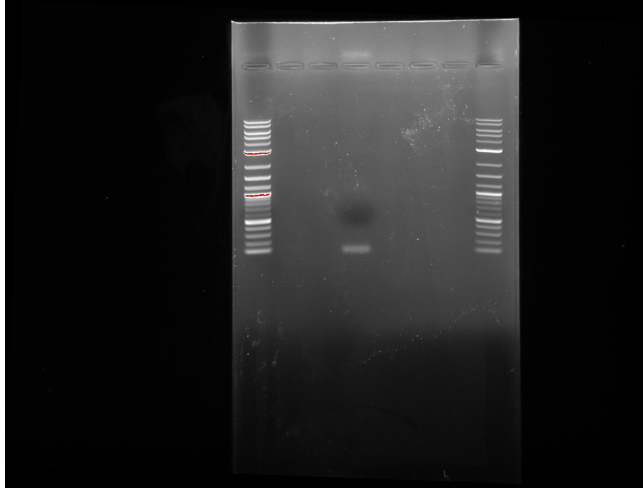


IGB 2018-06-21_13h59m17s.jpg





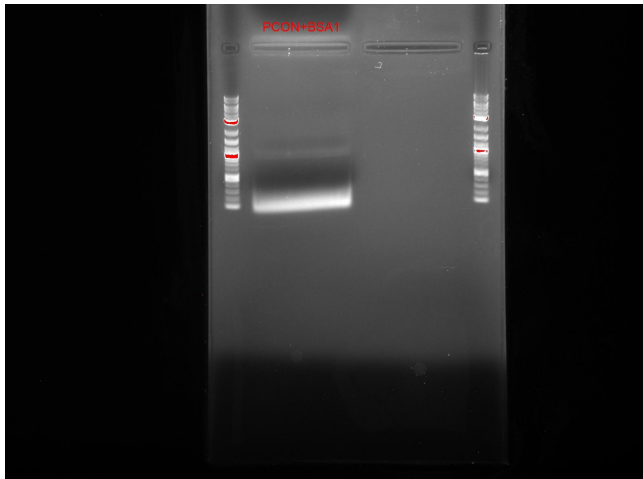
IGB 2018-06-21_16h36m23s pCon - Xbal half primer double template and both run 2

 IGB 2018-06-21_16h36m23s pCon - XbaI half primer double template and both run 2.jpg 





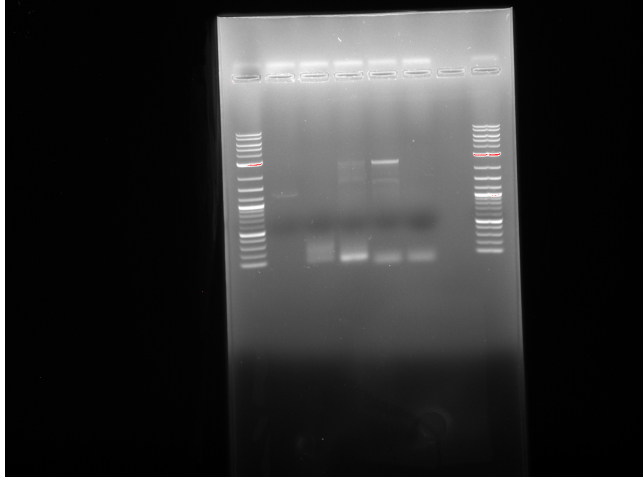
IGB 2018-06-21_17h02m16s PCON +BSA1 (PCR product)

 IGB 2018-06-21_17h02m16s PCON +BSA1 (PCR product).jpg 





FRIDAY, 6/22/18

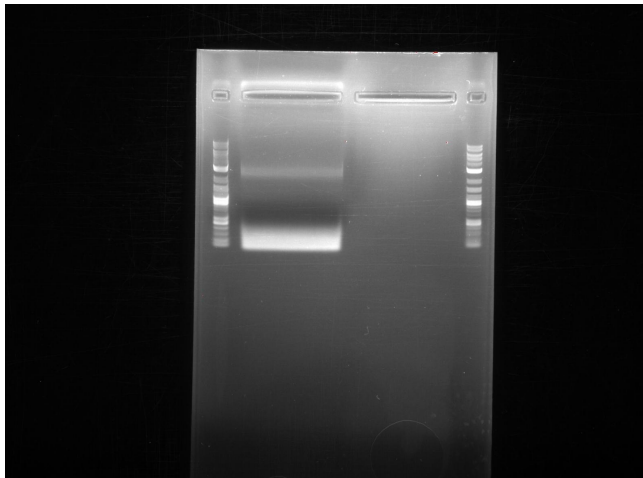
 IGB 2018-06-22_14h21m47s (PCR for pcon +BSA1).tif 



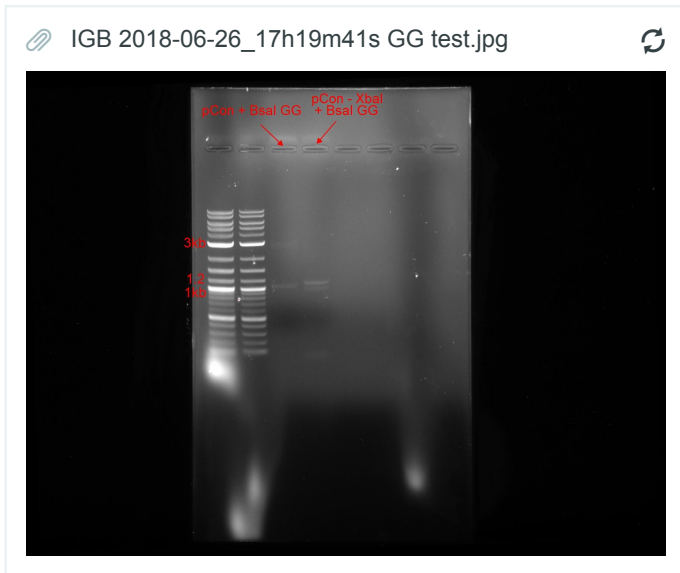
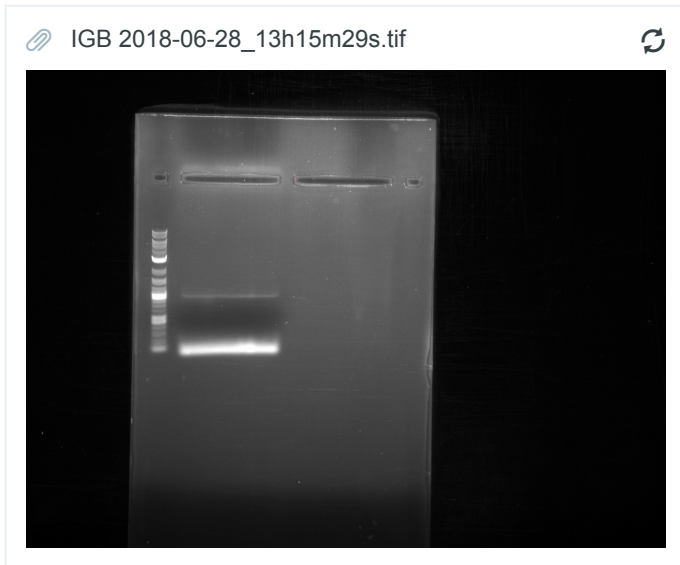
 Fluorescence OD 2018-6-20.xlsx 

IGB 2018-06-22_17h05m58s pCon + Bsal 70.5C + DMSO

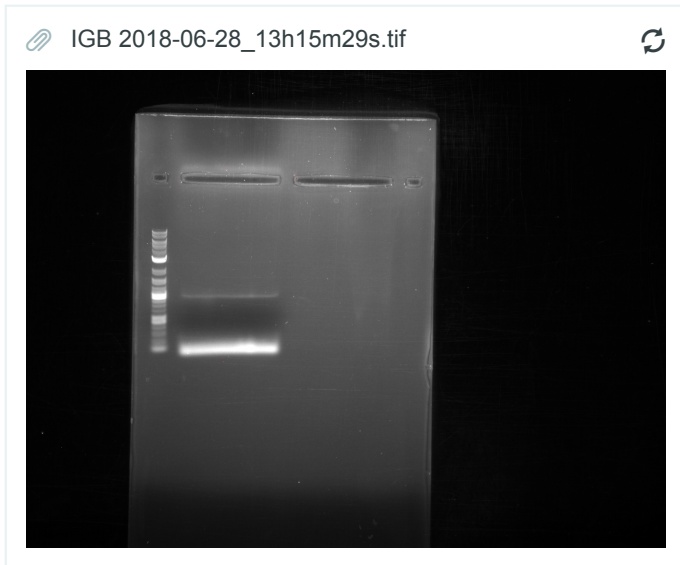
 IGB 2018-06-22_17h05m58s pCon + Bsal 70.5C + DMSO.jpg 



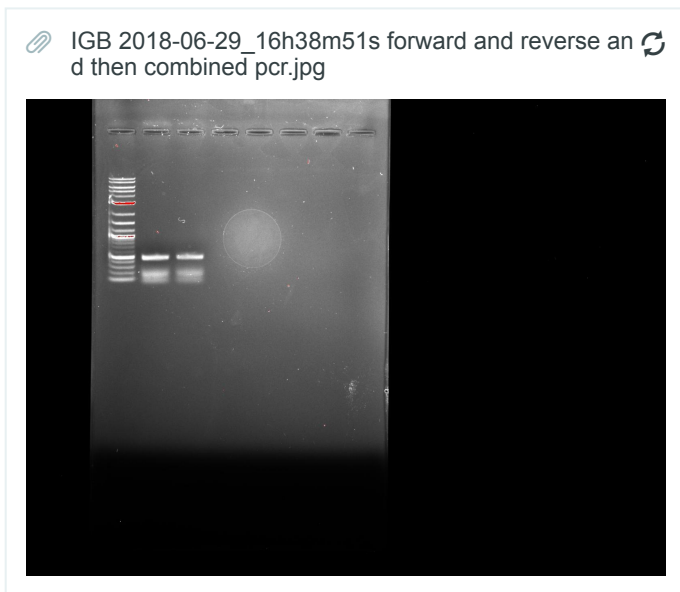
IGB 2018-06-26_17h19m41s GG test



IGB 2018-06-28_13h15m29s +Bsal gel extraction failed

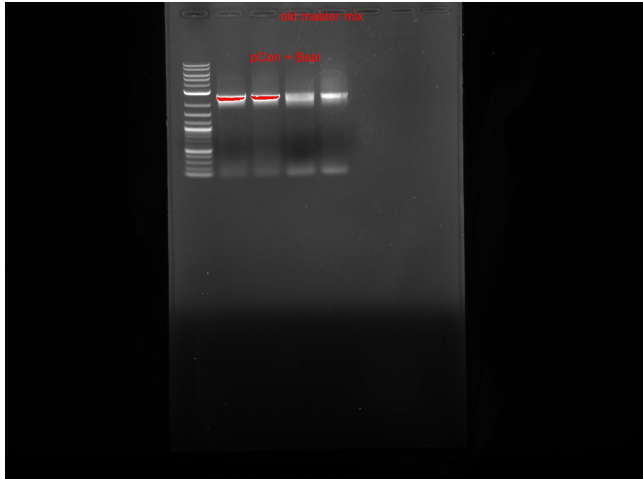


IGB 2018-06-29_16h38m51s forward and reverse and then combined pcr



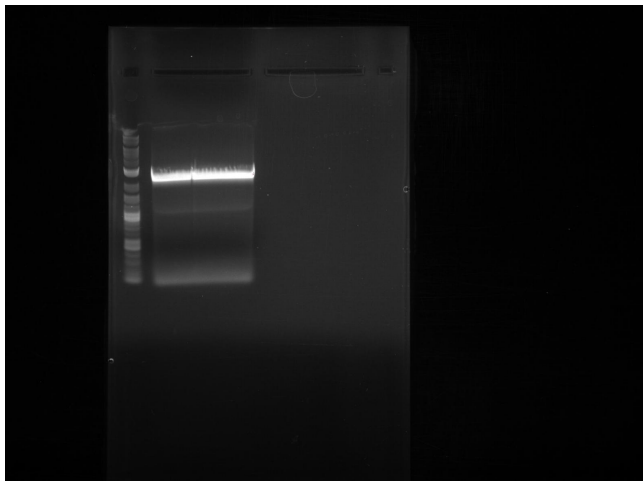
IGB 2018-07-09_16h19m00s pCon + Bsal with new primers(60bp

IGB 2018-07-09_16h19m00s pCon + Bsal with new primers(60bp.jpg



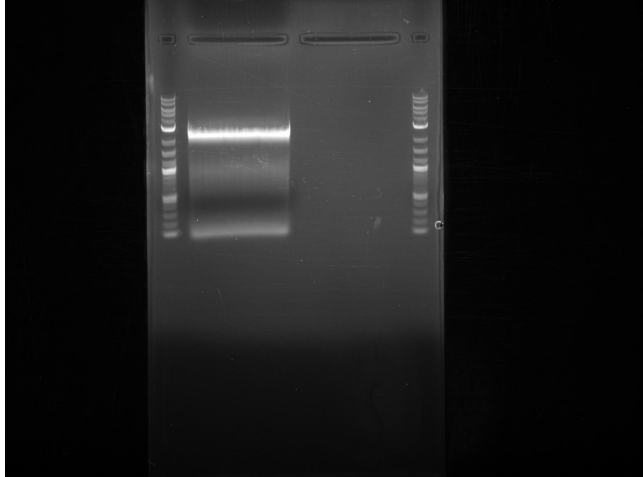
IGB 2018-07-10_12h35m38s pCon + Bsal with nre primer(60bp gel extraction

IGB 2018-07-10_12h35m38s pCon + Bsal with nre primer(60bp gel extraction.jpg



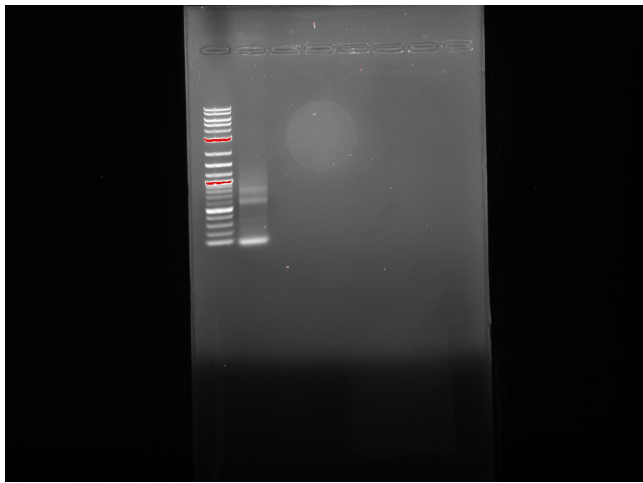
IGB 2018-07-16_12h18m33s pCon + Bsal with new primers

IGB 2018-07-16_12h18m33s pCon + Bsal with new primers.jpg





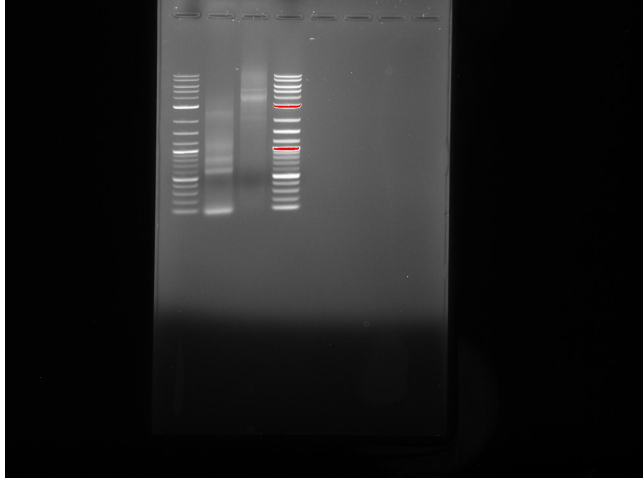
IGB 2018-07-19_15h20m26s pCon + Bsal

IGB 2018-07-19_15h20m26s pCon + Bsal.jpg




IGB 2018-07-23_14h07m01s pCon + Bsal with old master mix and pCon

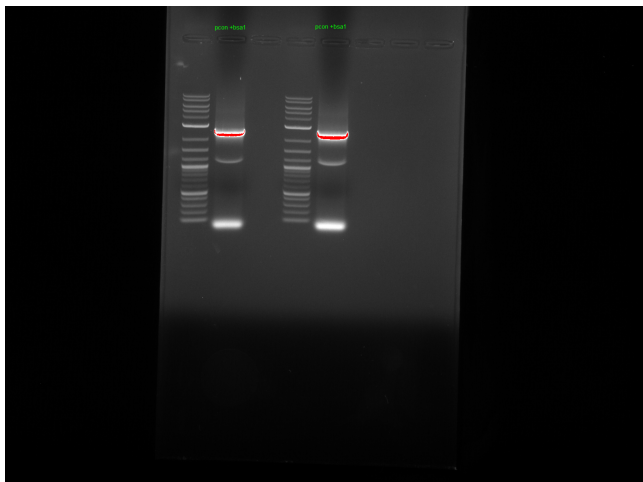
 IGB 2018-07-23_14h07m01s pCon + Bsal with old m aster mix and pCon.jpg 



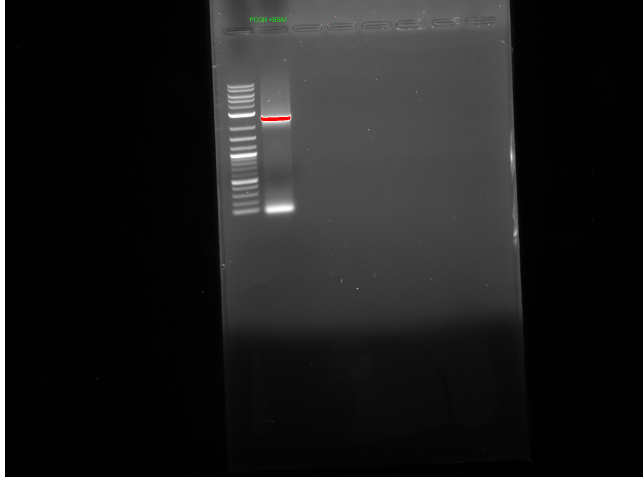
 Growth_Curve_8-1-18_Data_with_graphs_final.xlsx 

 8-2-18_Growth_Curve_Data_Uptodate.xlsx 

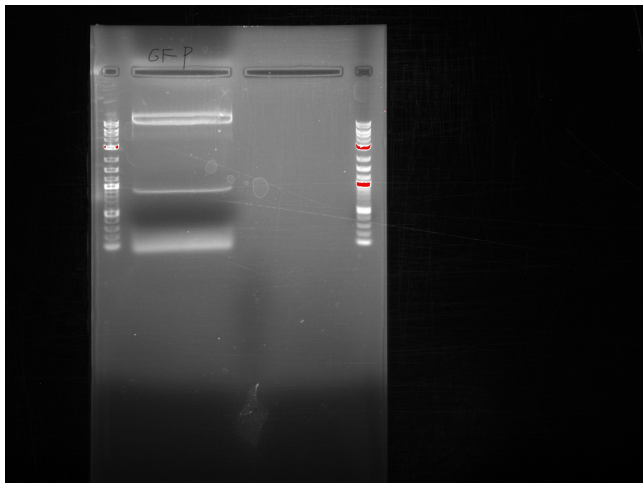
 IGB 2018-08-06_12h46m30s pcon +bsa1.tif 



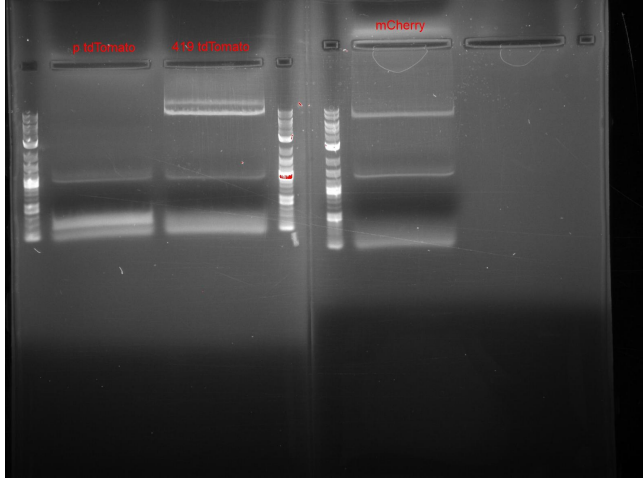
IGB 2018-08-07_10h31m41s PCON +BSA1 SUCCE
SS TIF.tif



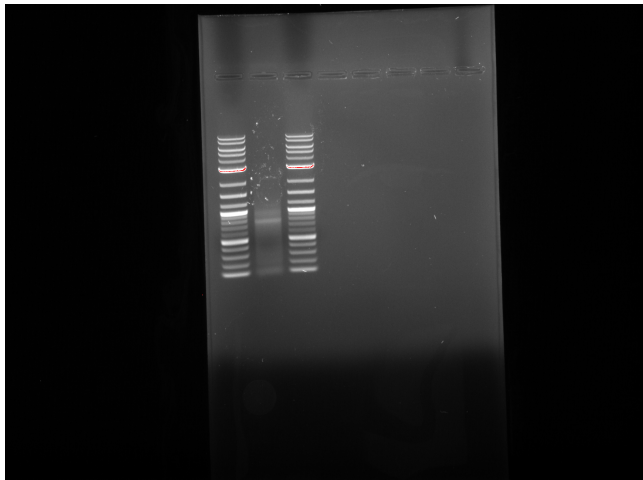
8/16 gfp gel purification

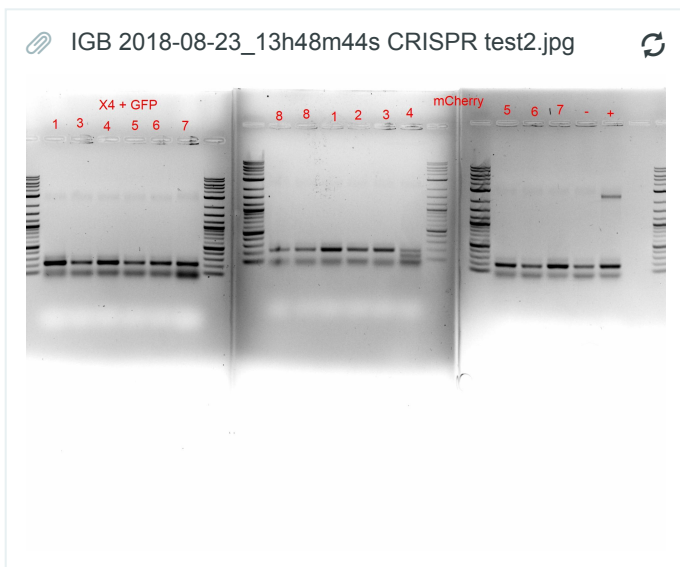
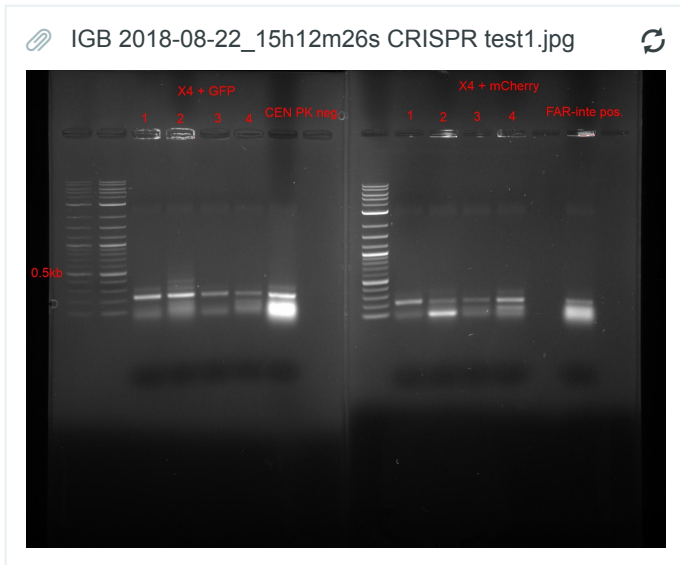


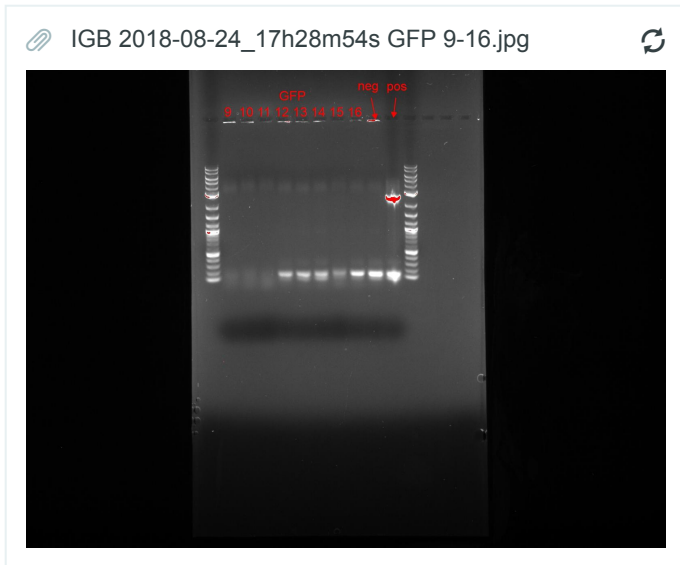
IGB 2018-08-17_12h58m16s 415-GPM & p tdtomato mCherry amplification.jpg



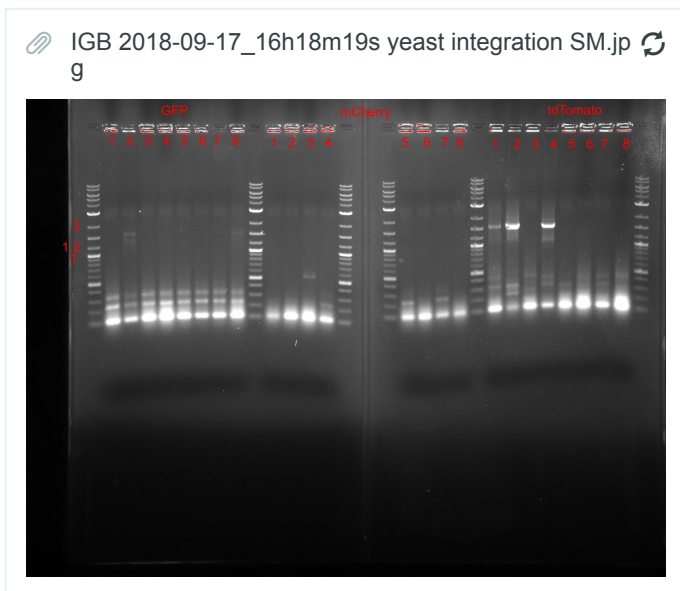
IGB 2018-08-20_16h20m30s.tif







Yeast integration



pcon-GFP biobrick prep

